



# Leptospermum continentale

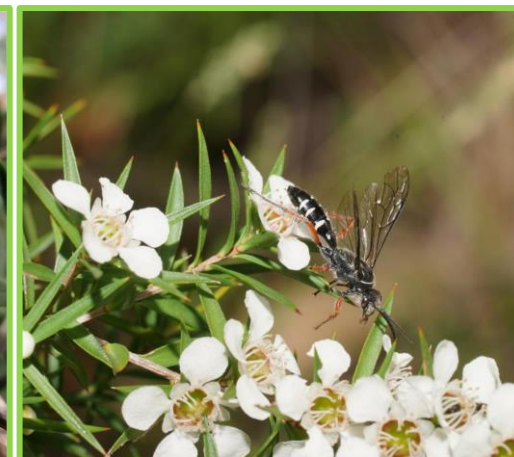
## Prickly Tea Tree



(Seeds of South Australia)



(Taylor, R, Seeds of South Australia)



(Richter, R, iNaturalist Australia)

**Form:** Large shrub    **Height:** 1 – 6 m    **Spread:** 0.6 – 4 m    **Flowers:** White    **Type:** Open-petalled    **Flowering time:** Spring, Summer

**Ecological functions:**



**Soils:** sand or loam; acidic or neutral

**Germination rate:** 3 to 6 weeks

**Seed collecting:** wear gloves when collecting fruits as leaves are prickly. Remove fruits or small branches containing fruits. Place on clean surface or material to dry. Pass fine seed through screens, to remove leaves. Store in dry area until required.

**Seed treatment:** none

**Sowing requirements:** brush aside large bark particles and sow on top of damp soil. Cover with a sparse layer of gravel. Sow in late Spring to Summer. Keep seedlings moist. Use liquid fertiliser 7 – 10 days after they first appear. Use Maxicrop, Thrive or Aquasol.

**Position:** full sun, part shade.

**Supplementary watering:** minimal

**Uses:** can be used as a screen, hedge for wider verges, nature strips, parks and reserves. Slightly prickly. Useful for poorly drained sites. Attracts nectar eating birds and butterflies. Dense copses are excellent refuges for native birds.

**Notes:** not recommended to plant closer than 2 m to any sewer main or connection.