

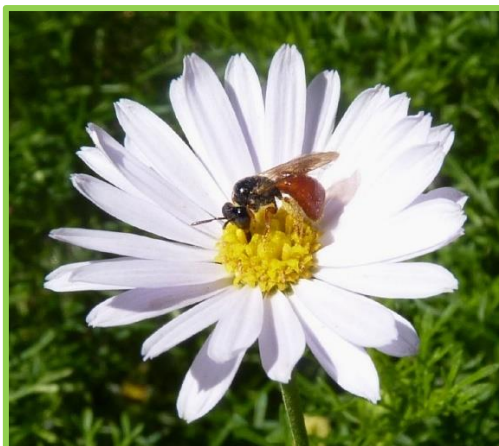


# Brachyscome multifida

## Cut leaf daisy



(Fagg, M, Australian Plant Image Index)



(Blair, N, Royal Botanic Gardens Board)



(Lay, G, Flora of Victoria)

**Form:** *Ground cover*    **Height:** *0.3 – 0.4 m*    **Spread:** *0.5 – 0.6 m*    **Flowers:** *Pink*    **Type:** *Star*    **Flowering time:** *Spring, Summer*

**Ecological functions:** 

**Soils:** *sand, clay or loam; acidic, alkaline or neutral*

**Germination rate:** *2 to 7 weeks*

**Seed collecting:** collect mature, brown seed head from the plant. Cut the stem at the base and enclose the seed head in a paper bag. Hang the paper bag upside down (with seed head pointing down). Shake the stem so the capsule releases the seeds within the bag.

**Seed treatment:** none

**Sowing requirements:** sow on top of damp soil and cover with a layer of gravel. Sow in Autumn to early Winter.

**Position:** full sun

**Supplementary watering:** moderate

**Uses:** versatile drought tolerant plant with daisy-like flowers. Food source and resting spot for butterflies.

**Notes:** can tolerate part shade and grow under trees and in half sun. Grows from cuttings.